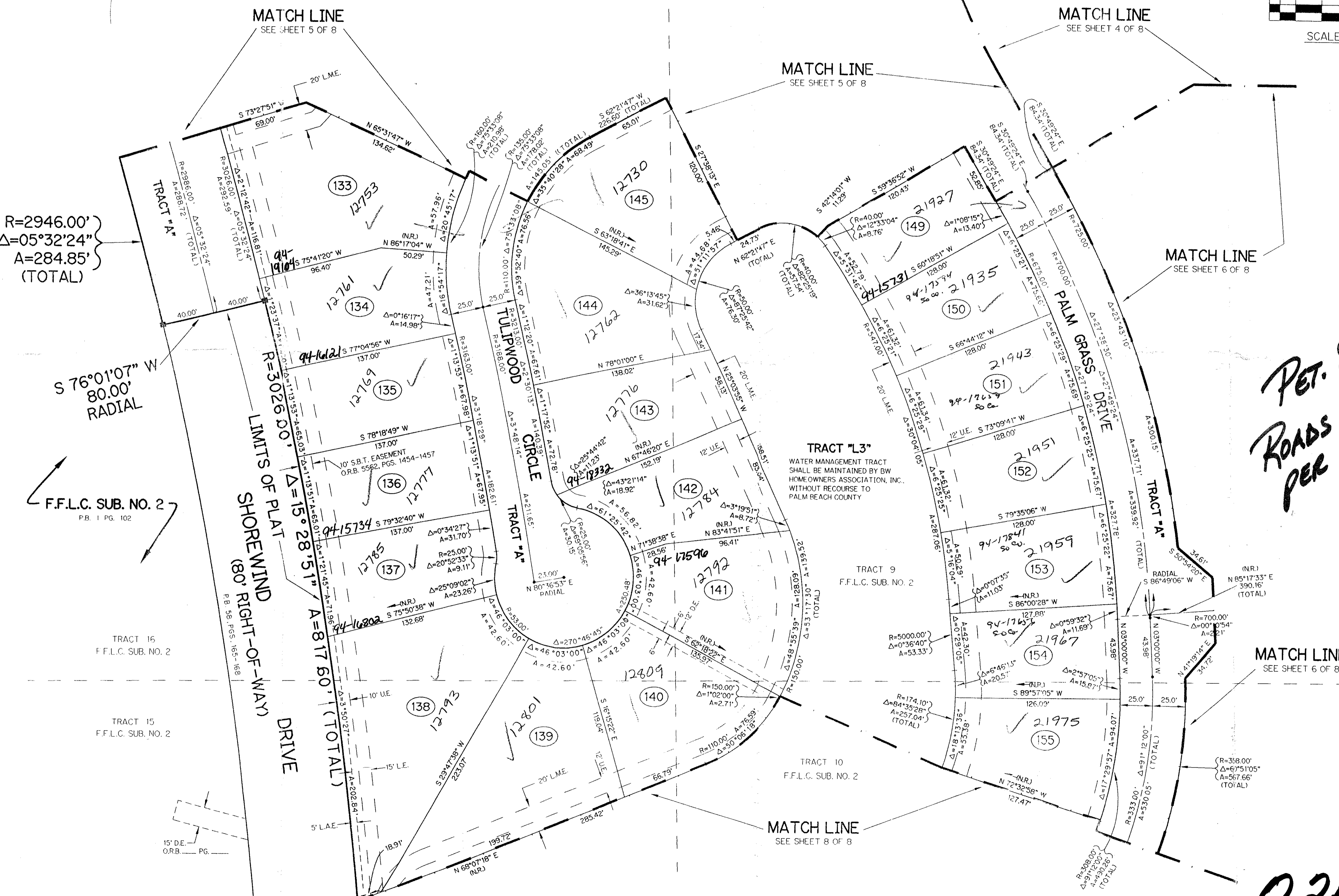
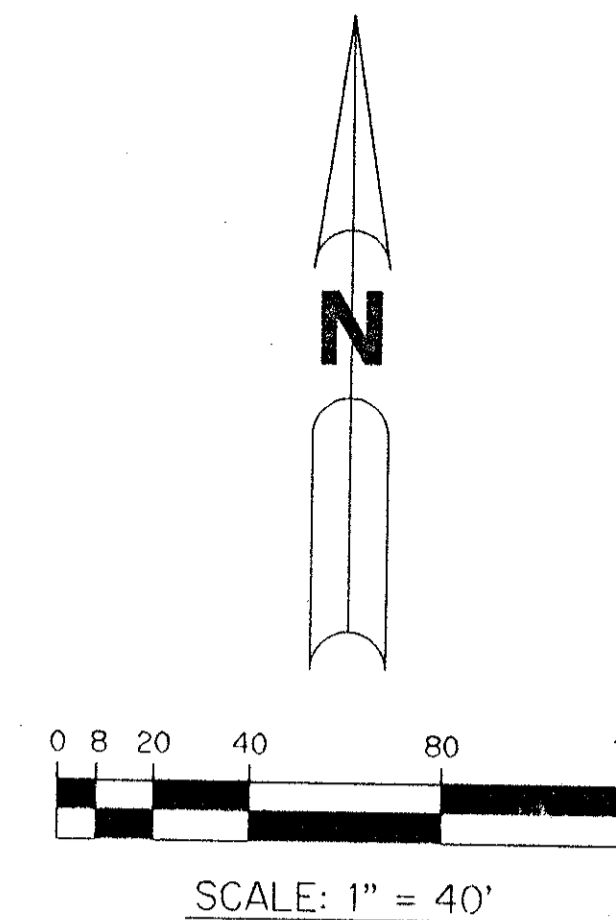


# BOCA WINDS - PARCEL E

A PARCEL OF LAND LYING IN SECTION 22 AND 27, TOWNSHIP 47 SOUTH, RANGE 41 EAST, SAID PARCEL ALSO BEING A REPLAT OF A PORTION OF TRACTS 9, 10, 11, 14, 15 AND 16, FLORIDA FRUITLANDS COMPANY'S SUBDIVISION NO. 2, AS RECORDED IN PLAT BOOK 1, PAGE 102, PUBLIC RECORDS OF PALM BEACH COUNTY, FLORIDA.

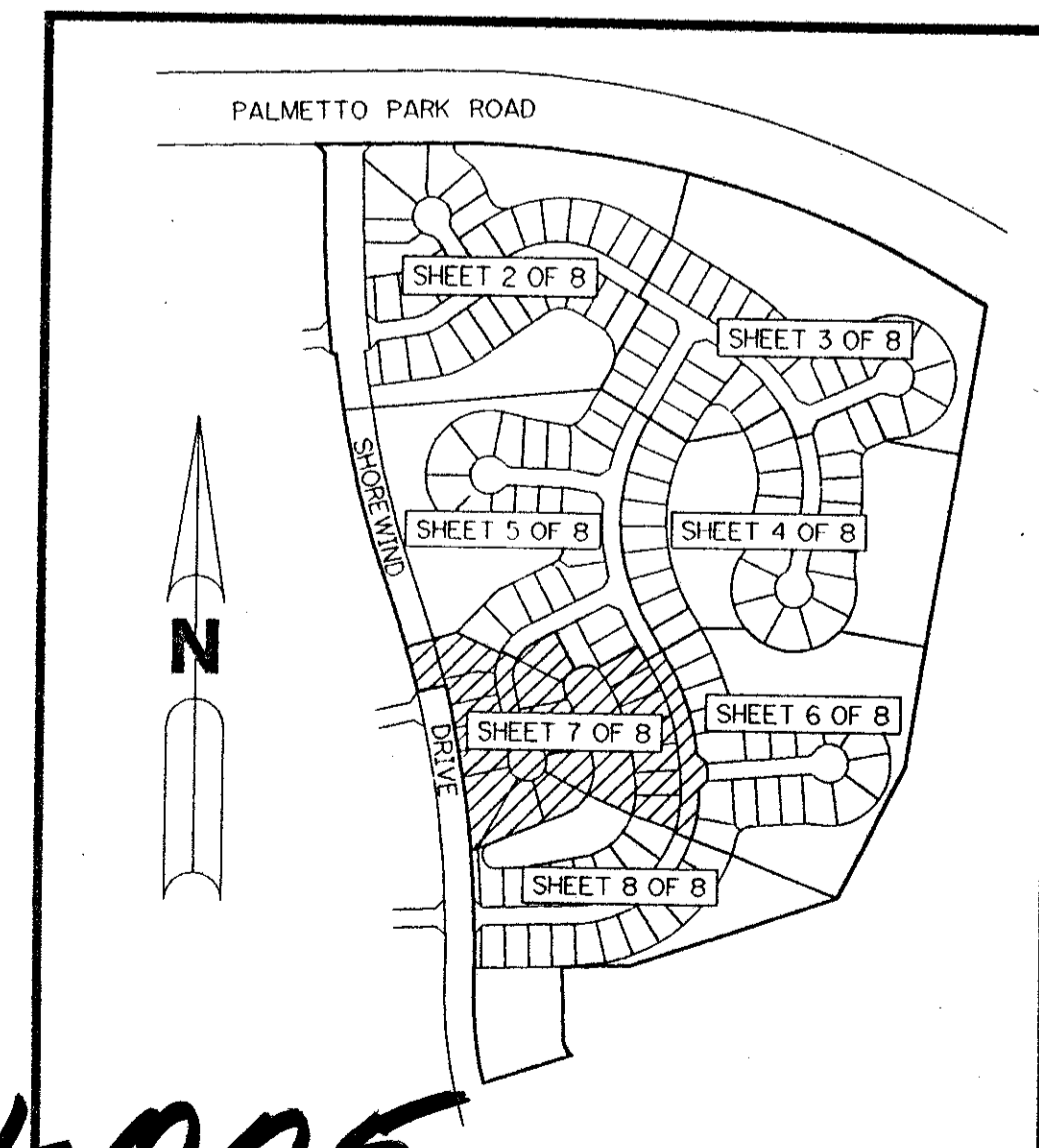
SHEET 7 OF 8 NOVEMBER, 1993



- LEGEND:**
- - PERMANENT REFERENCE MONUMENT, PLS #4213
  - - PERMANENT CONTROL POINT, PLS #4213
  - Δ - DELTA ANGLE
  - A - ARC LENGTH
  - R - RADIUS
  - D.E. - DRAINAGE EASEMENT
  - F.F.E. - FLOOD PLAIN EASEMENT
  - L.A.E. - LIMITED ACCESS EASEMENT
  - L.M.E. - LAKE MAINTENANCE EASEMENT
  - N.R. - NOT RADIAL
  - O.R. - OFFICIAL RECORD
  - O.R.B. - OFFICIAL RECORD BOOK
  - O.S. - OPEN SPACE
  - P.B. - PLAT BOOK
  - PGS. - PAGES
  - P.L.S. - PROFESSIONAL LAND SURVEYOR
  - S.T. - SURVEY TIE LINE
  - U.E. - UTILITY EASEMENT
  - L.M.A.E. - LAKE MAINTENANCE ACCESS EASEMENT
  - L.E. - LANDSCAPE EASEMENT
  - F.F.L.C. - FLORIDA FRUITLANDS COMPANY'S SUB. NO. 2
  - S.B.T. - SOUTHERN BELL TELEPHONE

*PET. 80-47  
ROADS \$1159.00  
PER UNIT*

THIS INSTRUMENT PREPARED BY  
PERRY C. WHITE P.L.S. 4213 STATE OF FLORIDA  
LAWSON, NOBLE AND ASSOCIATES, INC.  
ENGINEERS PLANNERS SURVEYORS  
WEST PALM BEACH, FLORIDA



PARCEL E  
BOCA WINDS  
SUBDIVISION # BOCA WINDS  
BOOK 72 PAGE 74  
FLOOD ZONE A0-4  
QUAD # 69  
SR 80-47  
ZIP CODE 33433  
ZONING RT  
PUD NAME BOCA WINDS

BOCA WINDS  
PARCEL "E"  
P.B. 58, PGS. 165-168

*0201-005*  
**BOCA WINDS - PARCEL E**

KEY MAP  
N.T.S. 12/74  
SHEET 7 OF 8

TAZ 778